

# Household Recycling and Waste Services Guide South Somerset



2010/11



# Sorting your recycling at the kerbside

In South Somerset we operate a system called SORT IT. This means local people sort their recycling in boxes and it's then put into different compartments on a collection vehicle. It is a simple, straightforward system that means materials do not get mixed up, so when they come to be re-processed we get a good, clean material at the end of it. Because we do things this way there is always a demand from manufacturers for the materials we collect and we can say that more than 99% of every thing we collect for recycling is actually recycled.



We also try to work with UK reproprocessors where we can. Around 90% of our materials are recycled in the UK. The remainder goes abroad, often in containers that would otherwise leave this country empty having been used to deliver imported goods to the UK.

Recycling does make a difference, with latest figures showing recycling in Somerset saves the equivalent in carbon dioxide of taking over 30,000 cars off the road.

We only succeed with your support. Thank you for recycling.

**Steve Read, Managing Director, Somerset Waste Partnership**

## **Please Remember!**

Your recycling and refuse should be out for collection no later than **7am** on the collection day, at the edge of your property nearest the kerb. Please be careful not to obstruct pavements or roads.

# Weekly Recycling collections



## **SORT IT**

Most households will have a recycling box for the following: -

**Paper**—including newspapers, magazines, catalogues, directories and other paper

**Glass bottles and jars**—rinsed and unbroken

**Food and drinks cans**—rinsed and squashed if possible

**Foil**—use the scrunch test—scrunch it up and if it stays scrunched it can be recycled

**Clothes**—In bags and only put out on dry days

**Shoes**—tied in pairs

**Car batteries**—one per collection



## **SORT IT PLUS**

During 2010 and 2011 we will start adding plastic bottles and cardboard to your collections. If you have a black recycling box in your home with plastic bottles and cardboard printed on the side you should be able to recycle these materials. If not, you will receive notification and an additional recycling box when the service starts in your area.

## **Household Batteries**

Supermarkets and many shops that sell batteries now have a drop off point where you can take them for recycling. Look out for them next time you're shopping.

# Fortnightly Refuse collections



Your domestic refuse will be collected fortnightly. If you have a wheeled bin for refuse, the lid must be closed and only refuse inside the bin will be collected. Additional refuse alongside or on top of your bin will not be taken.

If your property is unsuitable for a wheeled bin, up to 4 sacks of refuse will be accepted each collection.



<b>Accepted:</b>	<b>Not Accepted:</b>
<p>Household waste which cannot be collected for recycling or composting such as:</p> <ul style="list-style-type: none"><li>• Plastic packaging and film</li><li>• Vacuum cleaner contents</li><li>• Cat, dog or other pet litter</li><li>• Disposable nappies</li></ul>	<ul style="list-style-type: none"><li>• Food waste and recyclable materials accepted by other collection services</li><li>• Garden waste</li><li>• Hot ash</li><li>• Rubble, earth and stones</li><li>• Hypodermics</li><li>• Bulky household items</li><li>• Engine oil, paint or other chemicals</li><li>• Business or commercial waste</li></ul>

# Weekly Food Waste collections

Food waste makes up over a quarter of the average household's bin waste by weight.



Your household should have been issued with a bin for food waste. This has a lockable lid, which can be opened by moving the handle backwards. Please lock the lid when putting out for collection.

There is also a smaller kitchen caddy to use inside your home.



Most food waste collected in Somerset is composted and used by local farms, helping the local economy. Some is also processed to produce environmentally friendly biogas for energy.

Use newspaper to wrap food waste or line your caddy, or buy special compostable liners with the "looped seedling" logo printed on the side.



**Do not use plastic bags** as they will not break down when composted. Food waste in plastic bags will not be collected (even ones marked "Biodegradable" do not break down enough). For a list of compostable liner stockists visit [www.somersetwaste.gov.uk](http://www.somersetwaste.gov.uk)

Yes please:	No thanks:
<ul style="list-style-type: none"><li>• All cooked and raw food including,</li><li>• Fruit and vegetables</li><li>• Meat and fish</li><li>• Cheese and egg shells</li><li>• Bread, pasta, cereal</li><li>• Tea bags, coffee grounds</li></ul>	<ul style="list-style-type: none"><li>• Plastic (including plastic bags)</li><li>• Garden Waste</li><li>• Any other household waste</li></ul>

# Garden Waste collections

There is a charge for fortnightly garden waste collections. For details or to place an order, please contact South Somerset District Council. See back page.

Garden waste will only be collected if contained inside the special wheelie bins or paper sacks that you have ordered. Wheeled bin lids must be closed.



Yes Please	No thanks
<ul style="list-style-type: none"><li>• Flowers, plants &amp; weeds</li><li>• Grass cuttings</li><li>• Straw or sawdust</li><li>• Hedge prunings (not more than 10cm thick)</li></ul>	<ul style="list-style-type: none"><li>• Plastic</li><li>• Metal</li><li>• Glass</li><li>• Cat &amp; Dog litter</li></ul>

# Home composting



Home composting is the best option for garden and some food waste. It saves money and has most environmental benefits. Somerset Waste Partnership promotes home composting through reduced price compost bin offers.

See [www.somersetwaste.gov.uk](http://www.somersetwaste.gov.uk) for further details.

## Assisted collections

This free service is for people who have mobility difficulties or an impairment which means they cannot carry their containers to the kerbside and there is no-one in the household who can assist them. Containers will be collected by the crew from an agreed external point on the property, emptied and returned to that point.

## Bulky waste collections

If you have bulky items like furniture or domestic appliances that are beyond use and you can't get to your local recycling centre, you can arrange a bulky waste collection. This is a charged service based on the number of items being collected.

## Clinical waste collections

Some people need to use clinical materials like dressings and syringes on a regular basis. If you regularly produce clinical waste contact customer services (see back page) and we will get in touch to talk about whether you need us to provide free clinical waste collections.

**To request any of these services please contact your district council customer services (see back page).**

## Blocks of flats

These will normally have large shared bins for refuse and recycling. If you'd prefer to have individual collections using recycling boxes and food waste bins you can contact us to request this. You will need a suitable collection point that can be seen and easily accessed from the road.

# Recycling Centres



Somerset Waste Partnership operates eighteen recycling centres across Somerset, opening seven days a week (closed Christmas Day, Boxing Day and New Year's Day) from 9am to 5pm in winter months (October to April) and 9am to 7pm in summer months (May to September). They take a wide range of items, including bulky and hazardous waste.

## Recycling Centres near you:

Castle Cary	Dimmer Lane BA7 7NR	01963 351725
Chard	Beeching Close TA20 1BB	01460 239180
Crewkerne	Blacknell Lane Ind Estate TA18 7HE	01460 78284
Somerton	Bancombe Road Estate TA11 6SB	01458 274643
Yeovil	Artillery Road, BA22 8RP	01935 411151

The following can be recycled at your local centre:

Batteries	Glass Bottles/Jars
Cans	Hardcore
Cardboard	Mobile Phones/Toner cartridges
Drink/Liquid Cartons (some sites)	Paper
Electrical Appliances	Plastic bottles
Engine Oil, Car Batteries	Scrap Metal
Fluorescent Tubes	Spectacles
Fridges/Freezers	Textiles and Shoes
Garden Waste	Wood

You can also take asbestos and plasterboard to the Yeovil centre. Please ensure asbestos is double wrapped and remember **site staff cannot assist with handling asbestos**. As space is limited for both please call first to ensure there is room available.

## Cut down waste

To save money and help the environment one of the simplest and best things to do is cut down on waste. There are many easy ways to do this.

**Cut out junk mail**—join the mailing preference service on [www.mpsonline.org.uk](http://www.mpsonline.org.uk) or by calling 0845 703 4599. It only takes a few moments and cuts out piles of unwanted mail.

**Reduce food waste**—Look for tasty recipes for using up leftover food; think about portion sizes; shop for what you need. These are just a few of the simple, easy ideas from [www.lovefoodhatewaste.com](http://www.lovefoodhatewaste.com).

**Reusable nappies**—stylish and save money see [www.somersetwaste.gov.uk](http://www.somersetwaste.gov.uk) or ask for our leaflet on 01963 351350.

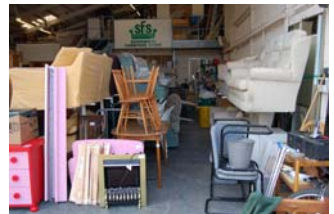
## Pass it on

In Somerset it's easy to find new homes for unwanted items.

- Freecycle at [www.uk.freecycle.org](http://www.uk.freecycle.org)
- Remember your local charity shop
- Make a little money at a car boot sale

Furniture and many electrical goods will often find a home through your local furniture reuse group:

Furnicare, The Mill, Boden Street, Chard  
01460 68221  
Furnicare, 32 Goldcroft, Yeovil  
01935 433416



Furniture re-use groups take unwanted items and sell them at low cost to households on low incomes in the area.

## Education

Somerset Waste Partnership funds the Somerset Waste Action Programme (SWAP), a team of educational professionals based at the Carymoor Environmental Trust.

SWAP make hundreds of visits to schools, colleges and community groups every year to promote waste reduction and resource efficiency.

To find out more go to [www.somersetwaste.gov.uk](http://www.somersetwaste.gov.uk) or call 01963 351350 to book a visit.

## End use

Do you wonder what happens to your recycling after it has been collected? Somerset Waste Partnership were the first council organisation in the UK to produce a full "End Use Register", showing exactly where your recycling ends up.

Now the government is recommending that all local authorities provide the same information, so you know that markets are good and what you send for recycling is actually recycled.

Visit [www.somersetwaste.gov.uk](http://www.somersetwaste.gov.uk) to download a copy.

## Information on-line

For free, regular e-news bulletins with the latest information on services and tips and hints to help you cut down on waste sign up for SORTED! e-news at [www.somersetwaste.gov.uk](http://www.somersetwaste.gov.uk).

Our website is your first port of call for information about services, including bad weather updates and things you can do to make a real difference in cutting waste.

[www.somersetwaste.gov.uk](http://www.somersetwaste.gov.uk)

# How we perform

## Percentage of Household Waste Sent for Recycling, Composting or Reuse (NI192)

	Position	Authority	%
Best Performing	1	Rutland County Council	52.94%
Somerset Waste Partnership (Nearest Neighbours)	4	Devon County Council	51.61%
	7	Somerset County Council	49.15%
	10	Dorset County Council	48.14%
	31	Gloucestershire County Council	42.01%
	39	Wiltshire County Council	40.51%
	58	Cornwall County Council	36.18%
Worst Performing	121	Tower Hamlets LB	19.33%

### High recycling rates

Somerset now has one of the highest recycling rates in the country—well ahead of national average of 37%. We hope, as we expand our kerbside recycling services, to push this up to 60% and beyond.

## Residual Household Waste per Household kg/hh (NI 191)

	Position	Authority	kg/hh
Best Performing	1	Bexley LB	537.10
Somerset Waste Partnership (Nearest Neighbours)	7	Dorset County Council	550.12
	9	Devon County Council	552.16
	14	Somerset Waste Partnership	565.06
	39	Gloucestershire County Council	632.26
	59	Wiltshire County Council	666.03
	95	Cornwall County Council	743.41
Worst Performing	121	East London Waste Authority	840.04

### Low residual waste

Somerset also has one of the lowest “residual waste” figures in the country. This is the amount of waste each household sends to landfill sites every year. Reducing waste is the best option for cutting costs and a greener environment.

Source—Defra, 2009



For further information on recycling and waste services contact:

South Somerset District Council  
customer services.

Call: 01935 462462

e-mail: [ssdc@southsomerset.gov.uk](mailto:ssdc@southsomerset.gov.uk)

[www.somersetwaste.gov.uk](http://www.somersetwaste.gov.uk)

Somerset Waste Partnership manages recycling and waste services on behalf of all local authorities in Somerset, including South Somerset District Council and Somerset County Council.

By working in partnership to deliver waste services around £1.5million is saved each year for Somerset.



**Business Recycling**—for advice on recycling for businesses visit [www.somersetwaste.gov.uk](http://www.somersetwaste.gov.uk)

If you need this information in large print, Braille, audio or another language please contact 01823 625700



RNID typetalk